

SSP2

Urban Laboratory Settings August 2006

Atypical Metro Vancouver Sites
for Peak Oil Impact Planning

Vancouver City Planning Commission/SSP Committee
New City Institute
Post Carbon Institute

Prepared for SSP2



Balfour + Associates • Strategic Planning
Balfour + Company • Architect

2638 W 14 Ave., Vancouver, B.C. V6K 2W9 T (604)731-0206 Fax (604)734-2638
email. balfourarch@telus.net ; www.plancanada.com Planning Advocate Urban Design Transportation

LANDMARKS & OPPORTUNITIES

Where is the hill town development

Vancouver City Centre • North Vancouver City Centre • False Creek Flats Focus
New Age of Rail, Integrating Industry, Traditional forms of city and land uses?



- Where are the green fingers to make the city sustainable
- Where are the urban villages
- Where is the industry integrated
- Where is urban farming taking place
- How is marine aspect made vibrant
- Where is the energy capture and saving

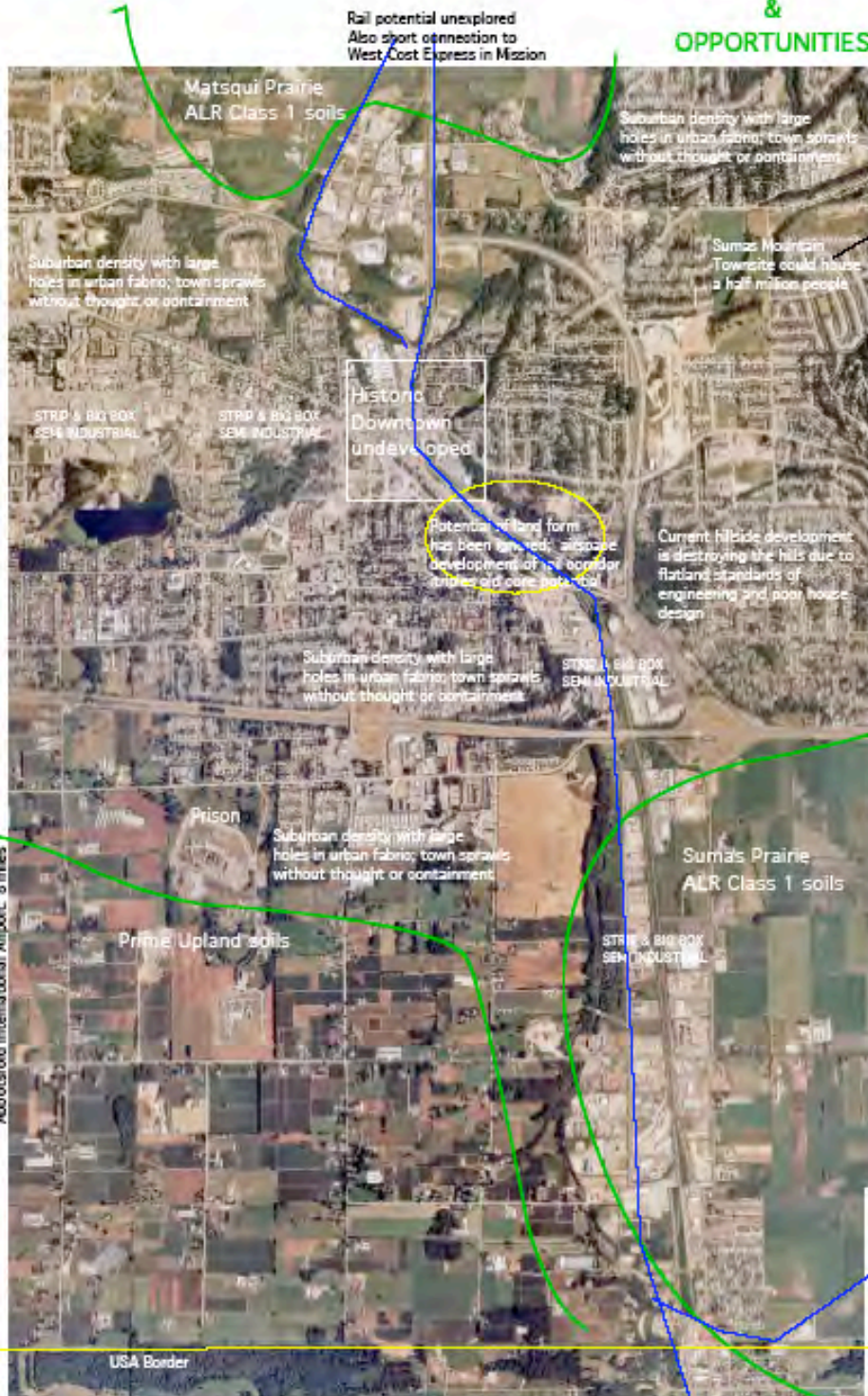


HALF MILE / 90 km

PEAK OIL IMPACT ON CITY & CULTURE WORKS/NOP 2006

SSP2 2006 VCPIC: SSP Committee • New City Institute • Post Carbon Institute

Abbotsford Historic Centre • Rampant StripCity • Sumas Mountain Townsite • Prime Farm Country



SSP2 2006 VCP/C: SSP Committee • New City Institute • Post Carbon Institute



Urban Village
100 ac -
200 ppl
2000 people/10 ac
120,000 p/sq.m.

Old suburbia
5 ac
15 ppl
150 people/10 ac
9000 people/sq.m.



HALF MILE/804m

PEAK OIL IMPACT ON
CITY & CULTURE
WORKSHOP 2006

Land & Water Interface • First Nations Tsawwassen • Waterfront Villages • Delta Port • Fraser Farmlands Focus

Delta -saving farmlands & habitat
Diversifying to traditional village forms?

Landmarks
&
Opportunities



half mile



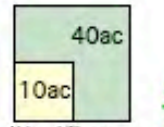
160 acres

PEAK OIL IMPACT ON
CITY & CULTURE
WORKSHOP 2006

Richmond City Centre • Marpole Urban Village • YVR • Fraser River Focus



LANDMARKS & OPPORTUNITIES

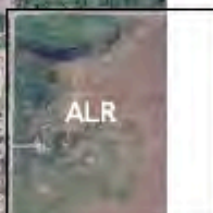


Urban Villages
 100 upa -
 200 ppa
 2000 people/10 ac
 128,000 p/sq.mi.

Old suburbia
 5 upa
 15 ppa
 150 people/10 ac
 9600 people/sq.mi.

NORTH RUNWAY APPROACH

SOUTH RUNWAY APPROACH



HALF MILE / 80-4m

PEAK OIL IMPACT ON CITY & CULTURE WORKSHOP 2006

SSP2 2006 VCPC: SSP Committee • New City Institute • Post Carbon Institute

**UBC: A Metro Centre
cul de sac or Crossroads?**



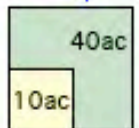
**LANDMARKS
&
OPPORTUNITIES**

UBC as a Metro Town Centre • YVR • Fraser River Focus



HALF MILE / 804m

**PEAK OIL IMPACT ON
CITY & CULTURE
WORKSHOP 2006**



Urban Villages
100 upa -
200 ppa
2000 people/10 ac
128,000 p/sq.mi.

Old suburbia
5 upa
15 ppa
150 people/10 ac.
9600 people/sq.mi.

SSP2 2006 VCPC: SSP Committee • New City Institute • Post Carbon Institute